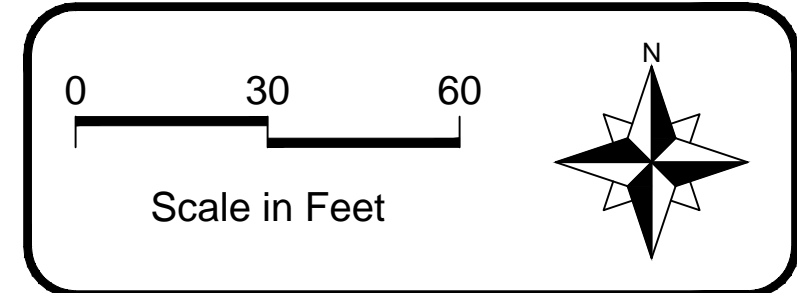
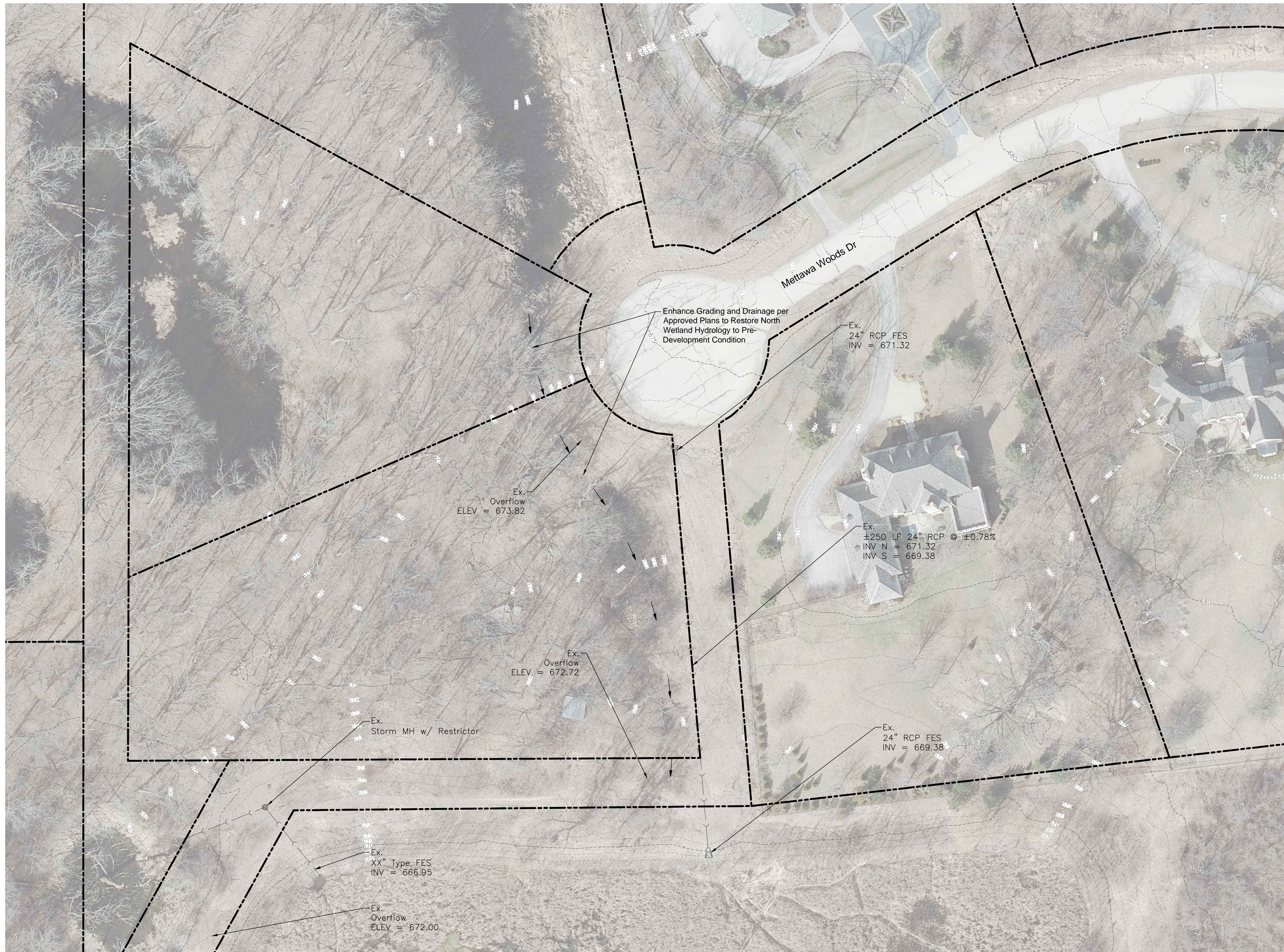


File: C:\Users\kjamies\OneDrive - Hey & Associates\Projects\20-0216 Mettawa - Stormwater Management Services\05 CAD\20-0216 Mettawa Drainage Improvements-Plan.dwg Plot Date: April 1, 2021 Plotted by: Kristen James



LEGEND		
	Property Line	
	Existing Contours	
	Existing Storm Sewer	
	Ex. Inlet	
	Ex. Flared End Section (FES)	
	Prop. Overland Flow	

No.	Revision/Issue	Date

Hey and Associates, Inc.
 Engineering, Ecology and Landscape Architecture
 26575 WEST COMMERCE DRIVE, SUITE 601
 VOLO, ILLINOIS 60073
 OFFICE (847) 740-0888
 FAX (847) 740-2888
 VOLO@HEYASSOC.COM

PROFESSIONAL DESIGN FIRM
 LICENSE NO. 184-002429

**Drainage Improvements
 Village of Mettawa**

**Overall Plan
 Initial Project Location 6
 Mettawa Woods Drive
 cul de sac**

PROJECT NO:	20-0216	DRAWING NO:	C4.0
DESIGNED BY:	DAK	CHECKED BY:	
DRAWN BY:	KNJ	APPROVED BY:	
CHECKED BY:		ISSUE DATE:	
APPROVED BY:		04/01/2021	SHEET NO:
ISSUE DATE:	04/01/2021		4

Preliminary

Copyright © 2021 Hey and Associates, Inc.